



7 Delia Avenue Revesby NSW

Spacious and effortlessly impressive, this immaculate brand-new double brick duplex presents contemporary family living set in a quiet cu-de-sac within short walking distance to Revesby Station and shops.

Filled with an abundance of natural light and offering flawless design this is a property for those buyers that are seeking an exquisite lifestyle in comfort and style with generous bedroom sizes, lavish bathrooms, and high-end inclusions.

Further features include,

- 5 generous sized bedrooms, two with ensuites carefully designed to provide comfort and privacy
- Double brick with concrete slab
- Master room includes walk-in robe and access to a private balcony
- Bedroom downstairs with full bathroom
- Open-plan living and dining area filled with natural light leading to a undercover alfresco area, perfect for entertaining family and friends
- Kitchen enjoys gas cooktop, dishwasher and breakfast bench
- Ducted air conditioning with video cameras and intercom
- Lock up garage with internal access
- Bright sunny aspect
- Positioned only a short walking distance to Revesby Train Station, shops and cafes with local schools and M5 nearby.

Exclusively listed by Alliance Real Estate.

Disclaimer: We have, in preparing this document, used our best endeavours to ensure that the information contained herein is true and accurate to the best of our knowledge, but accept no responsibility and disclaim all liability in respect of any errors, omissions, inaccuracies or mis-statements contained in this document. Prospective purchasers should make their own enquiries to verify the information contained in this document.

5 🏠 4 🏡 2 🚗

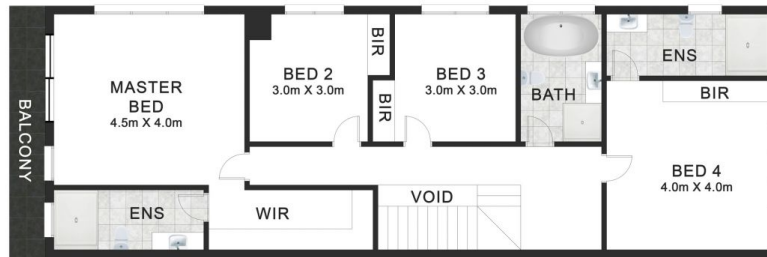
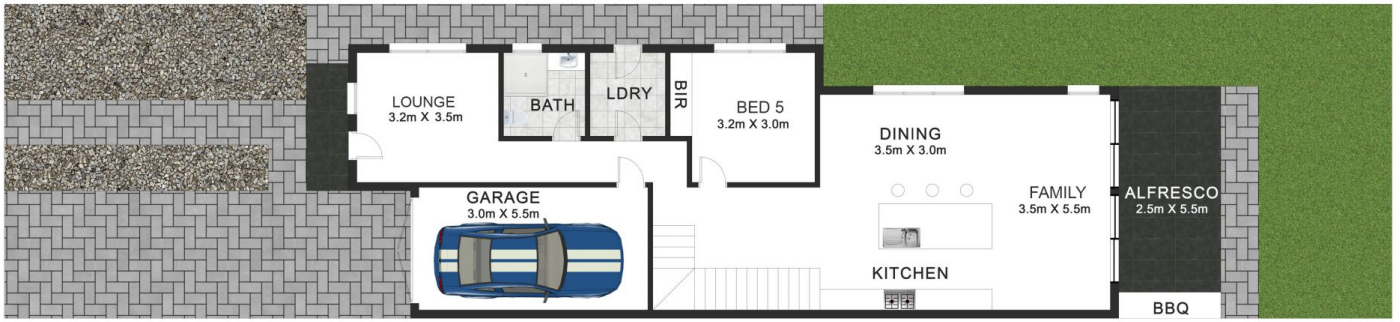
Price : CONTACT AGENT
Land Size : 282 sqm
Inspection Times : Saturday 04th May 11:30 AM - 12:00 PM



Theo Kalinderidis
02 8112 8852
theo@allianceaust.com.au



Trang Lazcano
02 9771 6115
trang@allianceaust.com.au



7 Delia Ave, Revesby

All reasonable care was taken in the preparation of this document, however no warranty is given to the accuracy of the information. Dimensions shown are approximate only.