



#### 14 Benfield Parade Panania NSW

This beautifully presented duplex home is positioned in a quiet street in Panania North close to schools, parks and transport. Freshly painted throughout and featuring new flooring, modern & spacious interiors plus a large covered entertaining area and private yard. An ideal family home or investment opportunity.




- 4 bedrooms all with built-in wardrobes - two with access to front balcony
- Main bedroom with ensuite
- Modern kitchen with new splashback and gas cooking and ample storage
- New flooring in living area and bedrooms
- Freshly painted throughout
- Ducted air-conditioning, downlights and high ceilings
- Downstairs guest powder room
- Spacious laundry
- Walk-in linen cupboard
- Large undercover outdoor entertaining area overlooking private and tranquil backyard
- Single lock-up garage with internal access + extra parking space
- Only metres from bus transport
- In Picnic Point High School catchment for Yrs 7 & 8 in 2023
- Approx. 300m to Panania North Public School

- Approx. 850m to Killara Reserve
- Approx. 950m to Panania Train Station

Contact Domi for more information.

Exclusively listed by Alliance Real Estate.

Disclaimer: We have, in preparing this document, used our best endeavours to ensure that the information contained herein is true and accurate to the best of our knowledge, but accept no responsibility and disclaim all liability in respect of any errors, omissions, inaccuracies or mis-statements contained in this document. Prospective purchasers should make their own enquiries to verify the information contained in this document.

4  2  2 

**Price** : \$ 1,075,000

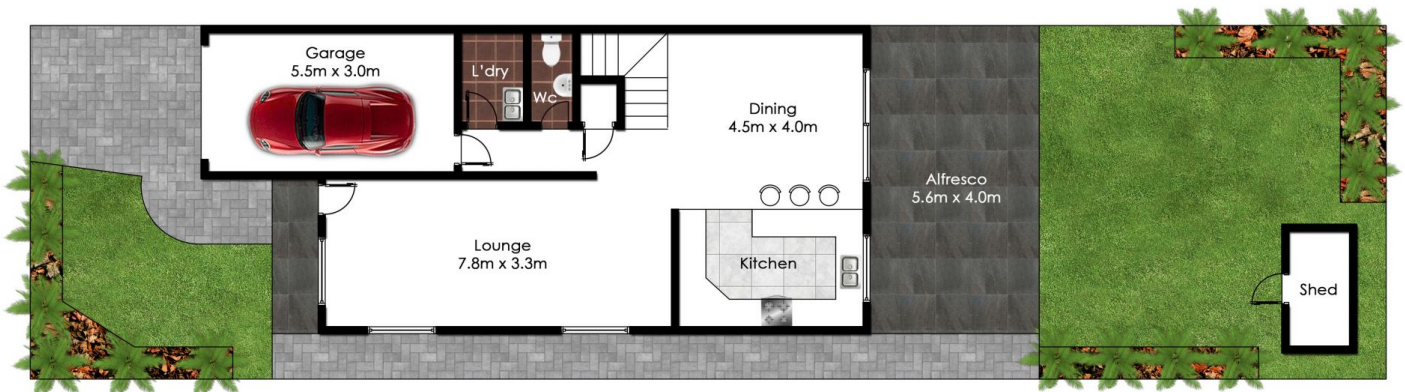
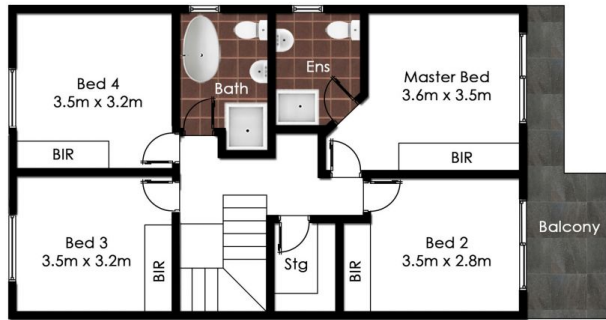
**Land Size** : 299.5 sqm



**Domi Antalfy**

**02 9771 6115**

**domi@allianceaust.com.au**



14 Benfield Parade, Panania

All reasonable care was taken in the preparation of this document, however no warranty is given to the accuracy of the information. Dimensions shown are approximate only.