



23 Snowsill Avenue Revesby NSW

Sleek and modern this stunning duplex home has been designed for relaxed family living.

Defined by a selection of quality finishing's, spacious interiors and a fabulous free flowing floor plan this property is completed by an ultra-convenient setting and is supremely positioned in close proximity to all amenities.

If you are looking for the ultimate in lifestyle, quality & size then look no further.

From the open plan living areas to the modern kitchen which features stone bench tops, gas appliances & a breakfast bench you will never have to compromise again.

Offering 3 large bedrooms upstairs which feature built in robes & the main with walk in robe, ensuite & a large private balcony.

The downstairs is tastefully tiled and has down lights throughout also featuring a bedroom with its own private bathroom.



Extra-large landscaped rear yard with an alfresco area and is big enough for the largest of family gatherings with plenty of room for children to play and a large double lock up garage to top this truly exceptional property.

So sit back, relax and enjoy the peace, privacy and convenience this home has to offer.

- ? 4 bedrooms with built ins & ensuite to the main
- ? Ultra-modern kitchen with dishwasher & gas appliances
- ? Generous living/ dining area off the kitchen
- ? 3 Ultra-modern bathrooms, Large grassed rear yard + Covered alfresco area
- ? Double lock up garage + storage & off street parking
- ? Semi Detached, land size approx 283sqm

Exclusively Listed by Alliance Real Estate.

Disclaimer: We have, in preparing this document, used our best endeavours to ensure that the information contained herein is true and accurate to the best of our knowledge, but accept no responsibility and disclaim all liability in respect of any errors, omissions, inaccuracies or mis-statements contained in this document. Prospective purchasers should make their own enquiries to verify the information contained in this document.

4  3  2 

Price : \$ 1,135,000

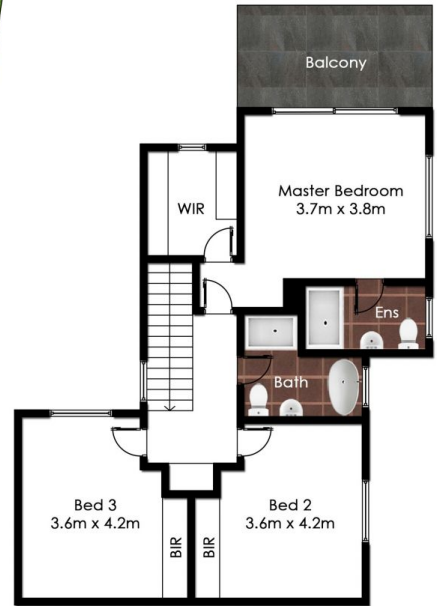
Land Size : 283 sqm



Andrew Prodromou
02 9771 6115
andrew@allianceaust.com.au



Rema Fakhoury
02 9771 6115
rema@allianceaust.com.au



23 Snowsill Avenue, **Revesby**

All reasonable care was taken in the preparation of this document, however no warranty is given to the accuracy of the information. Dimensions shown are approximate only. **floorplan** by www.opticoolestudios.com

© 2024 - Alliance Real Estate

The sender believes that this E-mail and any attachments were free of any virus, worm, Trojan horse, and/or malicious code when sent. This message and its attachments could have been infected during transmission. By reading the message and opening any attachments, the recipient accepts full responsibility for taking protective and remedial action about viruses and other defects. The sender's employer is not liable for any loss or damage arising in any way from this message or its attachments.