



1/4 Beale Street Liverpool NSW

Discover your new sanctuary in this charming double brick apartment, nestled within a secure building amidst lush greenery. Featuring bright, airy interiors and a well-presented layout for effortless living, this home boasts a separate kitchen with stainless steel appliances, two generously sized bedrooms with mirrored built-in robes, and a central living zone with a split-system air-conditioner. Step out onto the private balcony for leisurely outdoor moments, and unwind in the sleek bathroom with a separate bath. A single lock-up garage ensures secure parking.

Situated in a peaceful enclave within a quiet cul-de-sac, this apartment offers tranquility and convenience in equal measure. Just a short stroll away from Liverpool CBD, hospitals, schools, and transport options, enjoy easy access to all amenities.

Regrettably, pets are not permitted in this apartment. Available for occupancy from 18/04/2024.

Don't miss the chance to make this delightful apartment your new home. Contact us today to schedule a viewing!

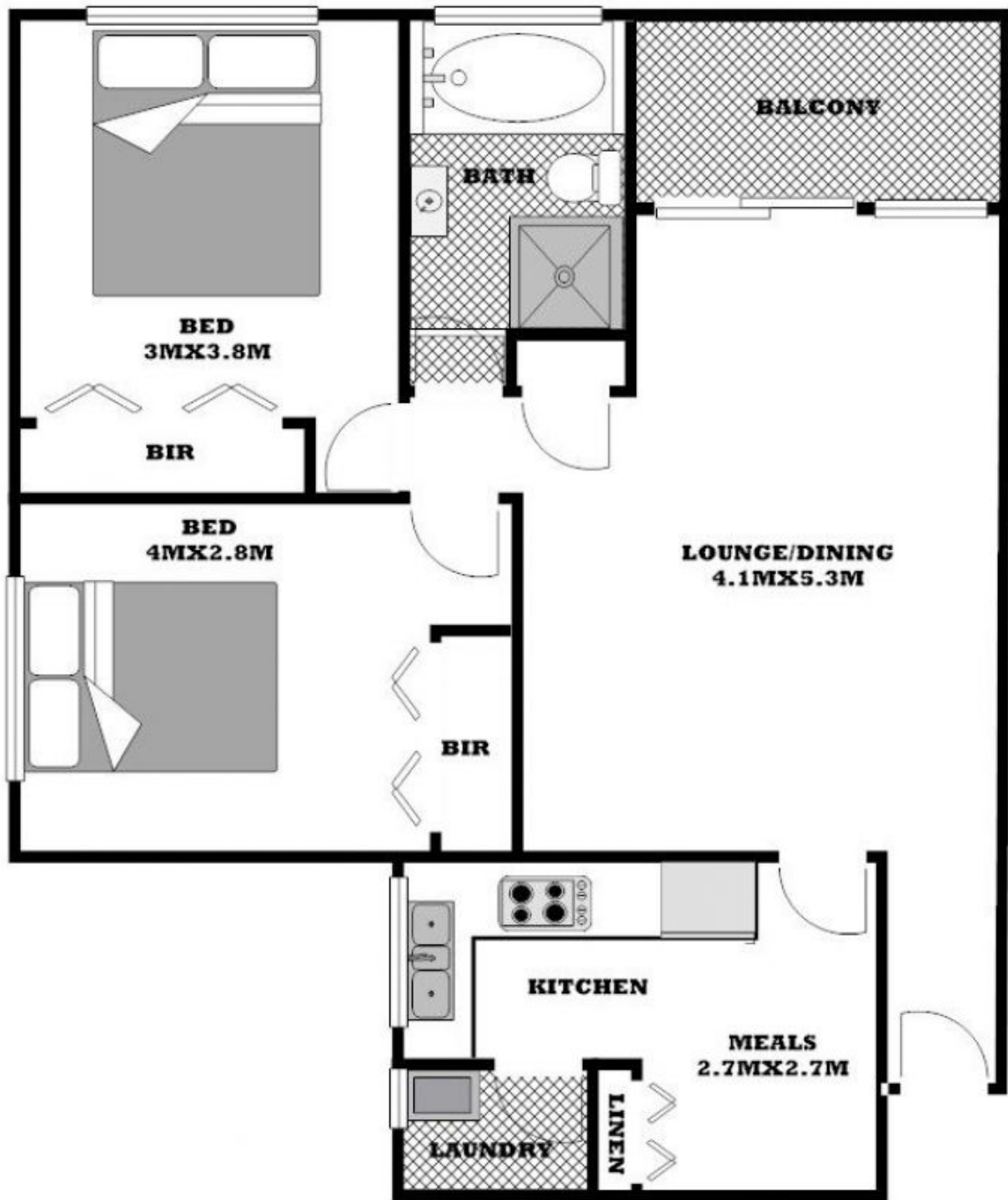
Disclaimer: We have, in preparing this document, used our best endeavours to ensure that the information contained herein is true and accurate to the best of our knowledge, but accept no responsibility and disclaim all liability in respect

of any errors, omissions, inaccuracies or mis-statements contained in this document. Prospective purchasers should make their own enquiries to verify the information contained in this document.

2 🏠 1 🏢 1 🚗



Margaret Lucas
02 8112 8855
margaret@allianceaust.com.au



DISCLAIMER: The information on this floor plan is provided by us in our capacity as a agents for the vendor, whose property we have listed for sale. Some information has been provided by a third party including the vendors concerned and has not been checked by us. We hold no belief or otherwise as to the accuracy. All prospective purchases should make their own enquiries, and should secure their own independent advice from appropriately qualified persons, in respect to the property concerned.