



### 23 Donald Street Picnic Point NSW

Lovingly maintained and located in a sought-after street in Picnic Point, this north facing property is beautifully presented and allows for easy living as soon as you move in.

You will be impressed with the free-flowing floorplan that includes tiled living areas, ducted air-conditioning, alarm system as well as spacious living and dining areas.

This home features a modern kitchen that includes a stone bench top, plenty of cupboard storage and stainless appliances.

Upstairs you will be spoilt with the size of the beautifully appointed bedrooms that include built in wardrobes. The main bedroom hosts an ensuite and walk in wardrobe.

You can enjoy the abundance of natural light from your choice of balconies as well as taking in the peace and serenity of the location.

The backyard is private and provides a large undercover alfresco that leads onto a good size grassed area.

Located in a quiet street, close to schools, shops, parks and The Georges River National Park, this home has everything




you are looking for.

- Modern kitchen and bathrooms
- High ceilings and double bedrooms
- Guest bathroom downstairs
- Internal laundry with shower
- Tandem lock up garage with internal access
- Rainwater tank
- Close to schools, shops, transport and parks
- Land size approximately: 328sqm

Please make your enquiries promptly to not miss out on what is simply a stunning property.

Exclusively Listed by Alliance Real Estate.

Disclaimer: We have, in preparing this document, used our best endeavours to ensure that the information contained herein is true and accurate to the best of our knowledge, but accept no responsibility and disclaim all liability in respect of any errors, omissions, inaccuracies or mis-statements contained in this document. Prospective purchasers should make their own enquiries to verify the information contained in this document.

4  3  3 

**Price** : \$ 1,035,000

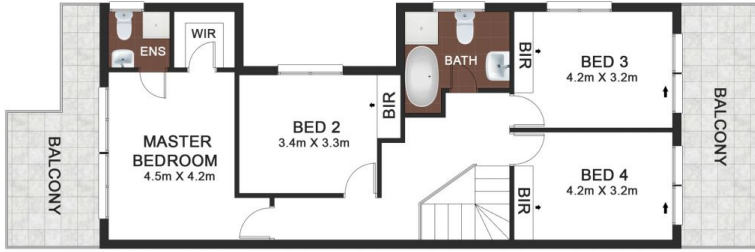
**Land Size** : 328 sqm



**Rema Fakhoury**

**02 9771 6115**

[rema@allianceaust.com.au](mailto:rema@allianceaust.com.au)



23 Donald Street, Picnic Point

All reasonable care was taken in the preparation of this document, however no warranty is given to the accuracy of the information. Dimensions shown are approximate only. floorplan by [www.optcoolstudios.com](http://www.optcoolstudios.com)