



#### **4/300-306 Canterbury Road Canterbury NSW**

Conveniently located just a short walk to Canterbury Train Station, shops, parks and the Cooks River this two bedroom unit is perfect for young couples, commuters and investors alike.

This spacious unit offers two large bedrooms with built in robes, modern ensuite with an additional powder room, internal laundry, modern kitchen with dishwasher and gas cooking plus a generous combined lounge and dining area opening onto a good size North East facing balcony.

With basement parking and storage, this unit has everything you could possibly need and is ideally located close to all amenities and approximately 12km from Sydney CBD.

We Love:

- 2 generous bedrooms
- Large combined lounge and dining with air conditioning
- Modern kitchen with dishwasher




Pluses:

- Walk to Canterbury Train Station
- Basement parking and storage

- Internal laundry

Exclusively Listed by Alliance Real Estate

Disclaimer: We have, in preparing this document, used our best endeavours to ensure that the information contained herein is true and accurate to the best of our knowledge, but accept no responsibility and disclaim all liability in respect of any errors, omissions, inaccuracies or mis-statements contained in this document. Prospective purchasers should make their own enquiries to verify the information contained in this document.

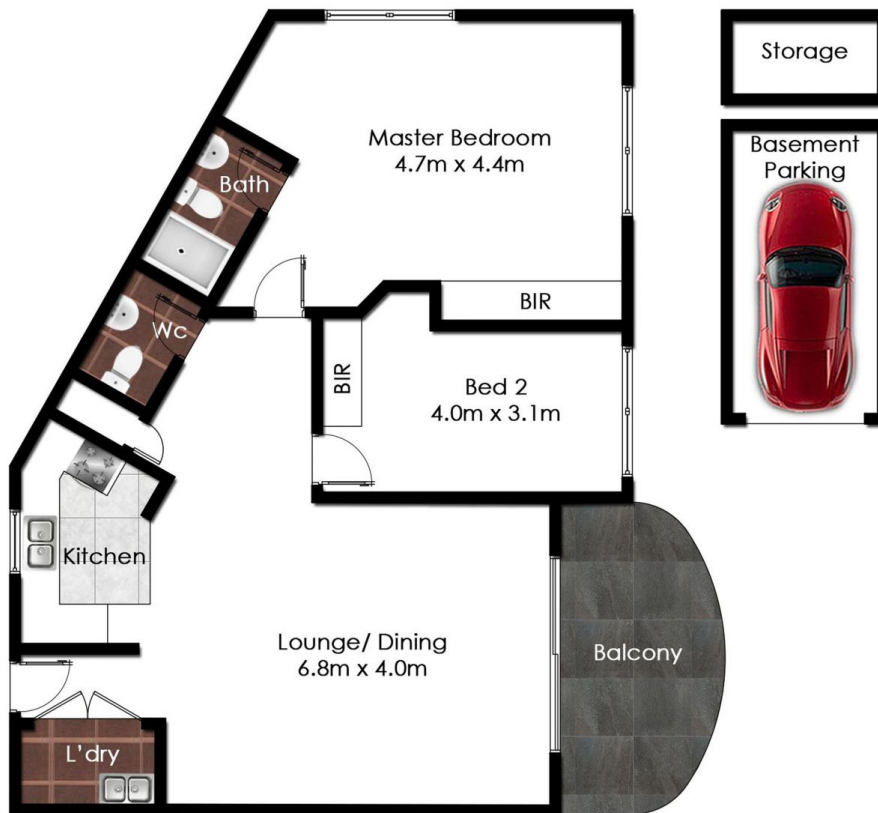
2  1  1 



**Theo Kalinderidis**  
**02 8112 8852**  
theo@allianceaust.com.au



**Domi Antalfy**  
**02 9771 6115**  
domi@allianceaust.com.au



4/300-306 Canterbury Road, **Canterbury**

All reasonable care was taken in the preparation of this document, however no warranty is given to the accuracy of the information. Dimensions shown are approximate only. floorplan by [www.opticoolstudios.com](http://www.opticoolstudios.com)

© 2024 - Alliance Real Estate

The sender believes that this E-mail and any attachments were free of any virus, worm, Trojan horse, and/or malicious code when sent. This message and its attachments could have been infected during transmission. By reading the message and opening any attachments, the recipient accepts full responsibility for taking protective and remedial action about viruses and other defects. The sender's employer is not liable for any loss or damage arising in any way from this message or its attachments.