



1/2a Victoria Street Revesby NSW

Located close to all amenities this beautifully renovated 2-bedroom home is perfect for a couple, singles or investors.

When entering the property you can sense the spacious layout of the large living and dining area that allows for plenty of flexibility with lounge and dining room furniture. The updated kitchen is also a great size and provides plenty of storage.

Upstairs you have 2 very spacious bedrooms with a walk in and built-in wardrobe. A large modern bathroom, large linen closet as well as air-conditioning for each room and shutters.

Out the back you have a large timber deck that is partly covered and has a beautiful bamboo screen and solar lighting. This is perfect for entertaining or just to relax after a long day. The back also contains a retractable clothes line and shed for convenience.

With a large internal laundry with additional toilet and large 1 car garage with storage this home is a great size for any requirement. Additional air conditioner, alarm and shutters downstairs ticks all the boxes.

In a small complex of 6 with low strata rates and low maintenance and conveniently located close to schools, shops and transport this home is a must see and would be perfect to live in or invest at approximately \$450 per week conservatively.

Without a doubt this is a beautiful home. Make it yours.




We Love:

- Renovated, spacious 2-bedroom home
- Spacious living/dining
- Massive timber alfresco deck

Pluses:

- Small Complex - Low strata
- Close to all amenities
- North-East Aspect

Disclaimer: We have, in preparing this document, used our best endeavours to ensure that the information contained herein is true and accurate to the best of our knowledge, but accept no responsibility and disclaim all liability in respect of any errors, omissions, inaccuracies or mis-statements contained in this document. Prospective purchasers should make their own enquiries to verify the information contained in this document.

2  1  1 

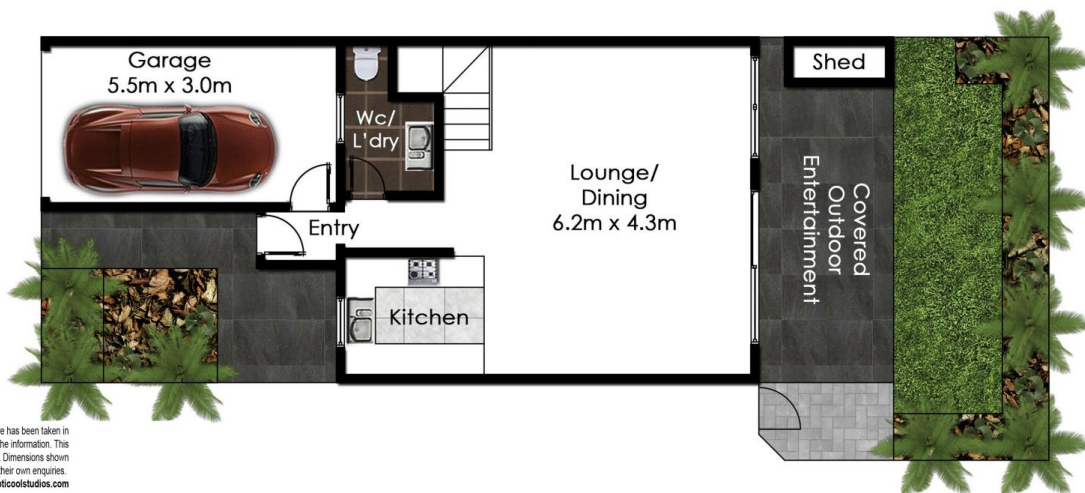
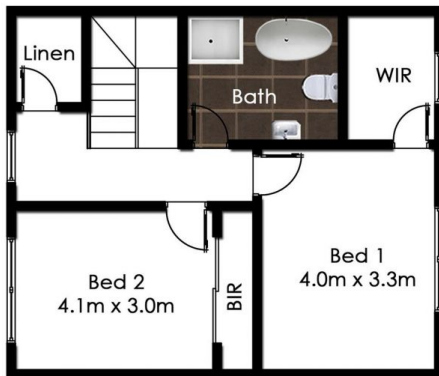


Theo Kalinderidis

02 8112 8852

theo@allianceaust.com.au

1/2A Victoria St,
Revesby, NSW
Floorplan & Siteplan
(siteplan not to scale)



This diagram is for illustrative purposes only. All reasonable care has been taken in the preparation, but no warranty is given to the accuracy of the information. This document does not constitute any part of any offer or contract. Dimensions shown are approximate only. Prospective purchasers must rely on their own enquiries. Photos and Floorplan by www.opticoolstudios.com