

## 2A Baldi Avenue Panania NSW

Only moments away from schools, shops and transport this new master built 4 bedroom double brick home is certainly at the top end of style and contemporary design.

With stunning street appeal and wow factor you will be captivated by the alucobond facade, deep balconies with glass balustrade and stainless rails.

On entering you will be presented with 2 living spaces, an internal laundry a separate powder room, an alfresco courtyard, a separate dining area and a modern kitchen that features stone benchtops and splashback as well as stainless gas appliances.

Out the back you have a large covered entertaining area that includes a full outdoor kitchen and looks out over an ample yet easy to maintain yard with plenty of privacy.

Upstairs you will be treated to 4 large bedrooms with the main including an en-suite and walk in wardrobe and the remaining bedrooms containing built-in robes and supported with a large and modern bathroom.

Featuring tiled flooring downstairs, timber floorboards upstairs, ducted air-conditioning, intercom, led downlights and alarm this property has it all.

With a large lock up garage with electric doors and adequate space for off street parking this property is perfect for the growing family.

Facing East this home has an ideal light drenched aspect that is perfect throughout the year. Also in a prime location only a short walk away from primary and secondary schools as well as close to Western University (Milperra campus) and Panania Train Station and shopping village.




We Love:

- Double Brick construction
- Close to Schools and station
- 4 Large bedrooms with robes

Pluses:

- East Facing aspect
- Modern kitchen with gas appliances
- 2 separate living areas and dining

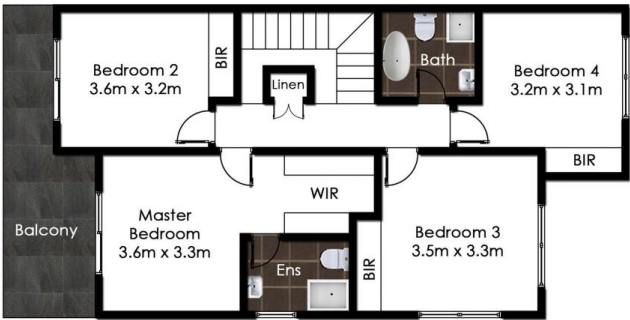
Disclaimer: We have, in preparing this document, used our best endeavours to ensure that the information contained herein is true and accurate to the best of our knowledge, but accept no responsibility and disclaim all liability in respect of any errors, omissions, inaccuracies or misstatements contained in this document. Prospective purchasers should make their own enquiries to verify the information contained in this document.

4  2  1 



**Theo Kalinderidis**  
**02 8112 8852**  
[theo@allianceaust.com.au](mailto:theo@allianceaust.com.au)

2 Baldi Ave,  
**Panania, NSW**  
Floorplan & Siteplan  
(siteplan not to scale)



This diagram is for illustrative purposes only. All reasonable care has been taken in the preparation, but no warranty is given to the accuracy of the information. This document does not constitute any part of any offer or contract. Dimensions shown are approximate only. Prospective purchasers must rely on their own enquiries. Photos and Floorplan by [www.opticoolestudios.com](http://www.opticoolestudios.com)