



18a Horsley Road Revesby NSW

Located close to Revesby shopping village, schools and train, this beautifully presented duplex would make an ideal family home or investment.

Featuring 4 great sized bedrooms, all with built-ins and carpet flooring. The main bedroom features a walk-in robe, balcony and ensuite.

Downstairs you will find a 5th bedroom or utilise it as an office space, plus a separate toilet and shower in the laundry.

Enjoy a relaxed, low maintenance lifestyle with the open plan design and tiled flooring downstairs. There is plenty of room for family and friends in the two living areas, dining area and modern kitchen.

Great for entertaining the kitchen has a large island bench, stainless steel appliances and overlooks the great backyard, perfect for kids to play.

We love:

- 4 bedrooms with built-ins, ensuite and balcony to main
- Large modern kitchen with plenty of storage
- Open plan design

Pluses:

- 5th bedroom downstairs
- Large backyard
- Close to all amenities

Disclaimer: We have, in preparing this document, used our best endeavours to ensure that the information contained herein is true and accurate to the best of our knowledge, but accept no responsibility and disclaim all liability in respect of any errors, omissions, inaccuracies or mis-statements contained in this document. Prospective purchasers should make their own enquiries to verify the information contained in this document.

5  3  1 

Price : \$ 1,020,000

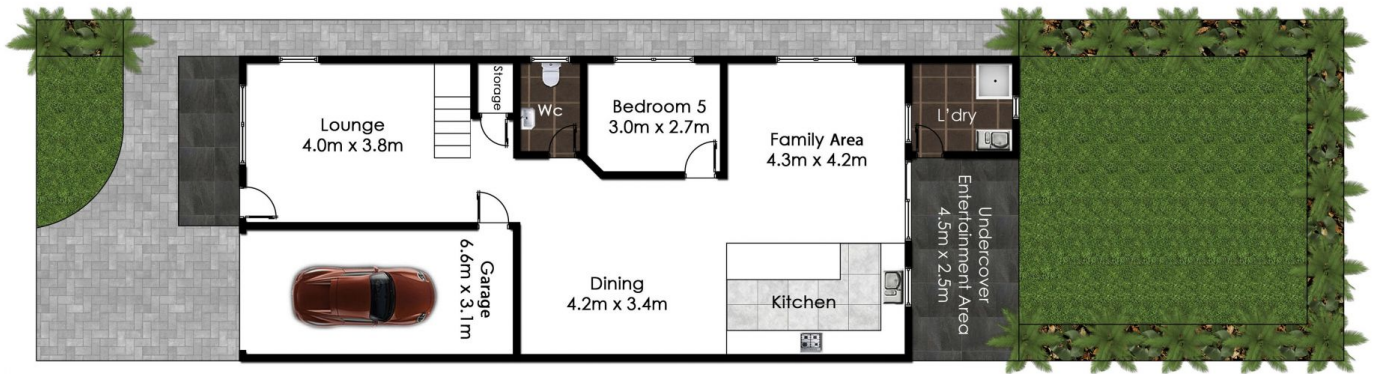
Land Size : 414 sqm




Chris Edwards

02 9771 6115

chris@allianceaust.com.au



18a Horsley Rd,
Revesby, NSW 
 Floorplan & Siteplan
 (siteplan not to scale)

This diagram is for illustrative purposes only. All reasonable care has been taken in the preparation, but no warranty is given to the accuracy of the information. This document does not constitute any part of any offer or contract. Dimensions shown are approximate only. Prospective purchasers must rely on their own enquiries.
 Photos and Floorplan by www.opticoolstudios.com